

The role of charitable waqf in achieving the objectives of sustainable human development strategy in the Egyptian sports institutions

Dr. Ahmed Rashad Mohamed Osman

The Introduction and the Research problem

Islamic Waqf is very Important due to its one of the important fields of charity which full of benefits. Abundance of Waqfs in Islamic Societies is source of proud to Islamic System. Muslims over the ages didn't leave any need of society needs; they made Waqf for it from their Money, whether on society, economic or religion level.

With development of the world today in means of mobilization of sources to social Institutions, which correspondence to Islamic Waqf whereas it has Independent legal personality, separate between Administration and title and its ability to collect money and invested it, which in turn facilitates financing and investing of Waqf and considering Waqf is a system can be developed to conform with society needs in every times and place. Taken into consideration developments of life, Waqfs must be activated with Economic to benefit Islamic Nations in the present and future, by making Waqf able to play its positive role in sustainable human development witnessed by Contemporary Islamic Societies to contribute in Achieving Sustainable Development, (165:3)

Saleh Salhy (2014) defines Charitable Waqf as “ transferring part of income and wealth to Permanent Takaful sources in which benefits of it, goods, services, returns, allocated to meet needs of several benefitted authorities which contribute to increase productive capacity to form and growth of Charitable Takaful Sector which is considered basis of social economic in Islamic Economy, by this meaning he motivate economic move benefit to wealth and grant access to balanced distributions between individuals of society, classes and successive generations, which is necessary from economic and social aspects and Civilization demand to achieve overall sustainable development in Islamic Economics (185-184: 16).

Social Role of Charitable Waqf includes:

- Ongoing charity (Remained or its asset remained).
- Express all forms of Wakfs, its prevent personal use, i.e establishing Economic capital able to produce benefits and dedication of recurrent benefits of the capital, which is present value of groups of future benefits, dedicated.
- Wakf of Money, this money may be fixed or movable and may be in kind like machines and cars, and may be in cash like Speculating or lending and may be financed benefit like benefit of transporting illness or fixed asset.

- Save money of Wakf, so it could be benefitted again, and therefore its includes meaning of continuity of money.
- Direct Wakf which produces benefits, including, investment of selling products and revenue is allocated to Wakf Purposes.
- Social and economic general charities. (23:18).

The importance of Wakf could be limited in:

- Wakf is permanent financing sources achieve Especial interest and public benefits. So, wakf could be described as container in which all people put money in it and its consider source of Benefits to country and people, through it interests and benefits of all is achieved.
- Wakf is the most widest door of social cohesion because of strong relations established within Islamic Society. Cells of community are activated again till it be as one body. (2:10)

Taking into Consideration contents of Wakf system whether from source of Wakf process and assets and financial containers of Wakf portfolio, and Aimed Authorities and all arises from institutions, activities and programs of all parties of wakf process and its goals, what is make Wakf System and Sustainable Development are necessary, what is prove that:

- Dimensions important for Sustainable Development are: natural sources and social dimension. The interest of Waqf in income redistribution, improvement of Economic Infrastructure and provide loans to all productive activities, are clear evidence of Waqf interest of exploiting natural sources and reducing gab between Social Classes.
- One of characteristics of Sustainable development is fulfilling of requirements and needs of boors in society and this represent main aim of Waqf which aimed boor, strangers, the needy, Orphans, Weak, Disabled, in debt and travellers.
- Sustainable Development is concerned with Developing soul and cultural aspects in society, and interest of waqf in financing Schools, Colleges, Science Center and enhancing ethical and behavioral aspect by preventing deviation sources is most evidence on interest of Waqf in soul and cultural aspects in Society.
- Sustainable Development is involved with Islamic Waqf in their interest of many dimensions concerning Human life, including, Economic Dimension, Cultural Dimension and Human Dimension. (14:20092).

Sustainable development is relevant new discussion started for the first time on 27, April, 1987 in report of UN Environment Assembly, entitled “Our Common Future” known as report of Brondtland (Sustainable Development), which mentions broad meaning of sustainable Development, as development which

fulfill needs of present generation Without prejudice of ability of future generations to meet their needs (Corinne Gendor, : 166)

Hence, Parpier sees that there are basic four characteristics of Sustainable Development as follows:

1. Sustainable Development is different from in general development as it more intervals and more complicated concerning what is natural (natural sources) and what is social in development.
2. Sustainable Development is directed to fulfill requirements and needs of most poor people and strive to reduce Poverty in world.
3. Sustainable Development has dimension concerning developing Soul and Cultural Aspects and preserving civilized privacy of Societies.
4. In case of Sustainable development we cannot separate its elements and its indications measure Intensity of interference of quantity and quality dimension (23:18).

Research Aim:

- Research aims to know the role of Charities Waqf in achieving the objectives of sustainable human development strategy in the Egyptian sports institutions.

The Research Question:

What is the role of Charities Waqf in achieving the objectives of sustainable human development strategy in the Egyptian sports institutions?

Research Terminology:

Linguistic concept of Charitable Waqf:

Waqf in Language is seizure, saying: home is seized i.e no one can dispose it. Plural Awqaf like cloth and cloths, Waqf and Seizure have the same meaning as well as Monetization, it's said, Fruit is monetized, i.e: paying it for the sake of Allah.(1:353).

Waqf, Also, defined as, permanent and temporarily Seizure for money to benefit it repeatedly or use its result in Kind of Public or private Righteous ways (62-21)

Sustainable Development Concept:

Report of Global Environment and development Committee, defined it as process meets needs of present without Bargaining ability of Future generations to meet their needs, Zyneb Hassan)

Barbier, 1987, Defines it as Economic Activity, which leads to upgrade of social welfare with more care due to Natural Resources Available and with fewer damage to environment. Edward Barbier, (1987) (239: 17)

United Nations Development Programme defines it as what is confirmed human is mean and vision of development whereas Human Development considers Economic Growth mean to grant welfare to people, and Human Development is just process of Development and increasing available

choices before human as essence of process of development, i.e Developing people by people.

United Nations Development Programme, 7525, page 27

Research Related:

1. Samir Dehilis (2017G) (13) Study entitled “Waqf funds as mechanism to activate developmental role of Waqf in Algeria, This study aims to Present a fact of Waqf Sector in Algeria, and clearing obstacles of developing it and activated it. This study tries to define Waqf Funds and its aims to appear effective role it played in achieving developmental role of Waqf. Research concludes that Restructure of Waqf in Algeria in form of funds or Waqf funds will contribute in developing and organizing of it and avoidance of obstacles faced by Waqf Sector in Algeria.
2. Somiy Gafer, (2014) (12) entitled “Role of Waqf Funds in Achieving Sustainable Development (Comparative Study between Kuwait and Malaysia), its concluded that Waqf Funds is one of forms of Money Seizure in which can be mean to revive role of Waqf in Sustainable Development, by its ability to mobilize Waqf Money through increasing charity people as well as its ability to maintain and developing money of Waqf by reasonable administration of Waqf and investing its money, and by financing developmental projects in fields of Health, Education, Technology, culture and environment protection. The Waqf Funds have an important role in fighting unemployment and poverty through financing Small and intermediate institutions and small projects. Its appeared that Waqf Funds contributes in meeting aims in supporting Sustainable development in Malaysia and Kuwait, therefore, Waqf Funds can be applied in rest of Islamic Countries.
3. Study of Saleh Salhy, Nawal Ibn Emara (2014 G) (15) Entitled “Islamic Waqf and its role in achieving Sustainable development: Present of Algerian Experiment in Using Awqafs. This study aims to clarification of concepts related to Islamic Waqf and Sustainable development and presenting effective Role which is played by Awqaf Institutions to achieve Sustainable development of countries and clearing effect of Waqf on Economic and Societies of Algeria through presenting experiment of Algeria in operating Awqafs. The research concluded that Awqafs could provide a lot concerning approving specialized efficiencies and this to guarantee seriousness and effectiveness in administrating Algerian Awafs which remained to be operated in inactive way and working to develop their performance in continuous way and amending Laws and legislations contributes in encouraging waqf and exploiting money of Waqf and holding specialized seminars in all nation to increase awareness of Waqf for individuals of community by clearing history of Waqf in Algeria.

4. Study of Rabia ben Zaid, Khirat Eldawy (2013 g) (10) entitled “Waqf bonds as Mechanism for achieving Sustainable Development: Suggested applied study to finance Awqaf projects in Algeria, both researchers conclude that Islamic bonds, are Islamic financial mean contributed in achieving Economic and Social development of Islamic Countries, for its ability to collect money and investment which allow financing and investing Awqaf Money and activating waqf to perform its essence role in achieving Sustainable Development in Islamic Society.
5. Study of Hamza Abdul-Halim (2013) (7) entitled “assessment of Kuwait Awqaf Experiment in achieving sustainable community development, he concludes that Kuwait Awqaf Experiment represented in General Secretariat of Kuwait Awqafs, managed to acquire Positive Specifications that makes it distinguished in Islamic World by contributing of it in community development and interested in Sustainable community development.
6. Study of Dalali Eljilany (2013 G) (9) entitled “role of Waf in scientific and cultural advancement – Reading in Islamic and Western experiments, study concludes that, if the capabilities of Waqf are employed to service Science and Education, Development Equation will be achieved as desired by nation and therefore Role of Waqf and Charitable work must be activated in overall science and cultural advancement through Inspiration of Human experiences in history, specially Islamic Experiment in which Scientific Waqf played role in every Intellectual ideas or achievement in cultural, Social and spirituality aspects for many centuries so waqf was scientific source, which cause of arising Muslim Civilization to other human civilization.
7. Study of Ezz Eldein Gad and others, (2013 g) (19) Entitled “Future vision to invest money of Charitable Waqf as source of financing Egyptian and Arabic Sports (Comparative Study). Research aims to know illicit Aspects to use charitable waqf as source of financing Egyptian and Arabic sport, conclusions were as follow:
Money of Charitable Waqf could be invested as source of financing Egyptian and Arabic Sport and developing Economic return of Charitable Waqf as source to finance sports in order to be used in community.
8. Study of Moatz Mohamed Mosbeh (2013 G) (20) Entitled “ role of Charitable Waqf in Economic Development (Applied Study for Qaza Sector). The study aimed to basically define role of Charitable Waqf, in cash and in kind, in economic development of Gaza Sector represented in Social, Religion, Education and Health Fields and Infrastructure and constructions Fields, the study concludes to groups of results which indicated week effect of Charitable Waqf on Economic Development, and media didn't publish Waqf awareness and its importance in Economic Development.

9. Study of Serbiya Abdulatif (2018) (23) entitled “role of Charitable Waqf in Achieving Human development. Aim of study was acquiring better understanding of problem concerning Waqf administration. Exploratory research is conducted which includes Meeting Concerned Power of Waqf Administration in Kelantan, State in Malaysia. Results show that inefficient administration is one of possible factor which could obstacle wise administration of Waqf and good administration of Charitable institutions in Islam, especially role of waqf in achieving Sustainable Development. However, a great rate of total waqf still not working all over the world.
10. Study of Hussein Elasrag (2017G) (22) entitled “towards new role of Charitable Waqf. Research aimed to highlight new role of Charitable Waqf so that Awqafs could be used to provide necessary needs of poor as well as to establish and enhance institutions of supporting Trade works which could reduce cost of business works to poor. Awqafs, Also, can be used to support and build institutions of infrastructure which could improve corporate governance and reduce costs of performing works. For example, offices of information, Organizing markets and authorities and providing services of Accounting, etc so that a group or all society could be financed through Waqf.

Procedures of the Research:

The Research Curriculum

Researcher uses Descriptive curriculum by using Survey method which is suitable to nature of Research.

Society and Sample of The Research

Sample of test is chosen by purposive method from professor of sports in some physical education colleges in Arab Republic of Egypt, and some members of Senior Management of Egyptian clubs and associations (76) persons, Survey sample reaches to 20 persons by percentage 26.31%. It has been applied in period from Sunday 25/2/2018 till Monday 12/3/2018. The basic sample reaches 56 persons by percentage 73.68%, and applied in period from Wednesday 14/3/2018 till Thursday 19/4/2018 G, this is shown in table 1.

Table (1)

Total Description of Research Sample

N=56

S	Statement	Survey Sample	Percentage	Basic Sample	Percentage
1	Teacher of Physical Education	8	40%	19	33.92%
2	members of Senior Management of Egyptian clubs and associations	12	60%	37	66.07%
-	Total	20	100%	56	100%

The Data- collection Methods & Tools:

Researcher prepares survey form to clarify opinions of experts concerning statements and questions of survey form concerning Charitable Waqf in achieving aims of Strategy of Sustainable Human development in Egyptian Sport institutions, through reviewing Researches, Scientific Journals and Relative Studies, the researcher defines Axis of Form:

- 1- Charitable Waqf and Sustainable Human Development.
- 2- In Kind Waqf and Sustainable Human Development.
- 3- Problems facing Charitable Waqf to support Sustainable Human Development.
- 4- Means and methods to develop Charitable Waqf in Sport field.

Researcher then presents this axis and statements in its initial text (Attachment 1) TO (5) experts (attachment 4) provided that their experiences is not lower than ten years to know the extent of suitability of axis and statements to aims of research, consent of existing axis or not, consent to form axis or reform it. Table (2) Clarifies Opinions of experts about axis of Survey Form.

Table (2)

Rate of Experts opinions concerning role of Charitable Waqf in Achieving aims of strategy of sustainable human development in Egyptian Sports Institutions
N=5

S	المحور	Consensus of Experts	Percentage	
1	.Charitable Waqf and Sustainable Human Development	-1	5	100%
2	.In Kind Waqf and Sustainable Human Development	2-	5	100%
3	Problems facing Charitable Waqf to support Sustainable Human Development	3-	4	80%
4	5- Means and methods to develop Charitable Waqf in Sport field		4	80%

Its appeared from Table (2) rate of experts opinions who agree on Axis existence, percentage was (80%, 100%) in Axis. Experts recommend amending formulation so that axis will be as follow:

- 1- First Axis: Charitable Waqf and Sustainable Human Development.
- 2- Second Axis: In kind Waqf and Sustainable Human Development
- 3- Third Axis: Problems facing Charitable Waqf to Support Sustainable human development.
- 4- Fourth Axis: Means and ways to develop Charitable Waqf in Sport field.

Determining statements of axis of Survey forms of role of Charitable Waqf in achieving aims of strategy of Sustainable Human Development in Egyptian Sport Institutions (Initial Form):

Researcher determines group of statements for each axis to be consistent with Survey axis which have been determined in (Attachment 1), according to experts opinions (Attachment 4), and he take into consideration when determining statements to be consistent with axis and aim in which it formed for. Statements numbers were 52 Statements. Table 3 shows this:

Table (3)

Determining statements of axis of survey form of role of Charitable Waqf in achieving aims of strategy of Sustainable Human Development in Egyptian Sport Institutions

Axis		Numbers of Statements
First	Charitable Waqf and Sustainable Human Development	14 statements
Second	In kind Waqf and Sustainable Human Development	10 statements
Third	Problems facing Charitable Waqf to Support Sustainable human development.	17 statements
Fourth	Means and ways to develop Charitable Waqf in Sport field.	11 statements
Total of Survey Statements		52 statements

Presenting statements of axis of survey form of role of Charitable Waqf in achieving aims of strategy of Sustainable Human Development in Egyptian Sport Institutions (Initial Form):

Researcher presents statements of axis of survey form of role of Charitable Waqf in achieving aims of strategy of Sustainable Human Development in Egyptian Sport Institutions (Initial Form) (attachment 1) including Axis and Statements represented it for the purpose of confirmation of its validity to axis represented by it (Attachment 2), Table (4) clarifies rate of opinions of experts in Survey.

Table (4)

Percentage of Expert opinions concerning axis statements of survey form of role of Charitable Waqf in achieving aims of strategy of Sustainable Human Development in Egyptian Sport Institutions (Initial Form) N=5

Axis Statement No.	First	Second	Third	Fourth
	Percentage	Percentage	Percentage	Percentage
1	80%	80%	80%	80%
2	100%	100%	100%	80%
3	100%	100%	100%	100%
4	80%	80%	80%	80%
5	100%	60%	100%	80%
6	80%	100%	100%	80%
7	60%	80%	100%	100%
8	100%	80%	80%	100%

9	100%	10%	80%	80%
10	80%	100%	80%	80%
11	100%		80%	100%
12	80%		100%	
13	80%		100%	
14	100%		80%	
15			100%	
16			60%	
17			60%	

Table (4) shows percentage of experts opinions in every statement of axis of form, so that its ranged from 80% to 100%. Researcher satisfies to take statements which get a great percentage more than 60% of Total Opinions, hence, statement No7 has been deleted from first axis and statement no5 from second axis and statement No.(16) and (17) of Third Axil, Statement No.11 of Fourth Axil, and therefore, statements numbers reaches to 47 statements.

Statements of axis of of survey form of role of Charitable Waqf in achieving aims of strategy of Sustainable Human Development in Egyptian Sport Institutions (Final Form):

After presenting survey form of role of Charitable Waqf in achieving aims of strategy of Sustainable Human Development in Egyptian Sport Institutions (Initial Form) which includes 52 statements before experts, its became 47 statements of final form. Experts recommend that form is corrected to Three estimates balance (Yes, No, sometimes). this has been shown in table (5), and therefore it's became ready to be applied on sample (attachment 3).

Table (5)

Percentage of Agreement between experts concerning determining method of correctness of Survey Form N= 5

S	Method of assessment of answers	Agreement between experts	Percentage
1	Highly agree – Intermediate agreement – doesn't agree	zero	zero
2	Yes - No – Sometimes	4	80%
3	Agree – Not Agree	1	20%
4	Yes- not sure - No	zero	% zero

The Exploratory (Pilot) Study:

Researcher Conducts Pilot Study on 20 persons of Teachers of Sports administration in some physical education colleges in Arab Republic of Egypt, and some Senior Administration of Egyptian clubs and Associations, by percentage (26.31%), it has been applied from Sunday 25/2/2018 to Monday 12/3/2018, which is Standardization sample used to find Scientific coefficient (validity – stability)

The Scientific Coefficient Of The Questioner:

Researcher performs validity and stability of form by following scientific methods:

The Validity Of The Questioner :

1. The Content Validity (The Judges Validity)

Validity of Experts as shown in table (4)

2. The Internal Consistency Validity

Researcher performs Correlation Coefficient between Degree of every sentences and total degree of axis and between Total Degree of Survey Form, this is shown in Table (6, 7):

Table (6)

Correlation Coefficient of statement of each axis and total degree of axil N= 20

First Axis		Second Axis		Third Axis		Fourth Axis	
Statement	Correlation Coefficient	Statement	Correlation Coefficient	Statement	Correlation Coefficient	Statement	Correlation Coefficient
1	0.536*	1	0.536*	1	0.761*	1	0.739*
2	0.581*	2	0.581*	2	0.511*	2	0.682*
3	0.795*	3	0.795*	3	0.771*	3	0.589*
4	0.688*	4	0.688*	4	0.572*	4	0.742*
5	0.728*	5	0.728*	5	0.778*	5	0.778*
6	0.801*	6	0.801*	6	0.552*	6	0.552*
7	0.497*	7	0.497*	7	0.675*	7	0.675*
8	0.622*	8	0.622*	8	0.822*	8	0.822*
9	0.732*	9	0.732*	9	0.502*	9	0.536*
10	0.771*	10		10	0.492*	10	0.581*
11	0.572*	11		11	0.687*	11	
12	0.778*	12		12	0.688*	12	
13	0.552*	13		13	0.728*	13	
14		14		14	0.801*	14	
15		15		15	0.682*	15	

R value = 0.222

From Table (6), It's appeared that Correlation Coefficient between Degree of Sentence and Total Degree of Survey has statistic evidence so it ranged from (0.822, 0.492) and this is a proof of Survey Validity.

Table (7)

Validity of Inner Continece of Axis of Survey form N= 20

S	Axis	Correlation Coefficient
1	Charitable Waqf and Sustainable Human Development	0.562*
2	In kind Waqf and Sustainable Human Development	0.687*
3	Problems facing Charitable Waqf to Support Sustainable human development.	0.827*
4	Means and ways to develop Charitable Waqf in Sport field.	0.756*

R Value: on level (0.05) = 0.222

It's appeared from table (7) that Correlation Coefficient of validity of inner Consistency to axis of survey form is ranged from 0.827 – 0.536 which is a proof that axis of form is evident.

Reliability Of The Questioner:

Reliability of Survey is calculated by way of test retest in a period (15) days to fined value of correlation coefficient between First and Second Application, as shown in table 8, 9

Table (8)

Correlation Coefficient between First and Second Applications of Statements of Survey N= 20

First Axis		Second Axis		Third Axis		Fourth Axis	
Statement	Correlation Coefficient	Statement	Correlation Coefficient	Statement	Correlation Coefficient	Statement	Correlation Coefficient
1	0.514*	1	0.769*	1	0.621*	1	0.782*
2	0.781*	2	0.745*	2	0.891*	2	0.653*
3	0.703*	3	0.516*	3	0.562*	3	0.589*
4	0.562*	4	0.778*	4	0.457*	4	0.742*
5	0.682*	5	0.741*	5	0.648*	5	0.778*

6	0.528*	6	0.628*	6	0.528*	6	0.662*
7	0.567*	7	0.852*	7	0.567*	7	0.869*
8	0.515*	8	0.557*	8	0.515*	8	0.822*
9	0.739*	9	0.617*	9	0.502*	9	0.874*
10	0.661*	10		10	0.492*	10	0.581*
11	0.488*	11		11	0.687*	11	
12	0.771*	12		12	0.688*	12	
13	0.511*	13		13	0.728*	13	
14		14		14	0.801*	14	
15		15		15	0.682*	15	

R value (table) in level (0.05) = 0.222

It's appeared from Table (8) that Correlation coefficient is ranged from 0.891 – 0.502) which is a proof on Reliability of all statements of Survey.

Table (9)

Correlation Coefficient between First and Second Applications of axis of Survey Form
N- 20

S	Axis	Correlation Coefficient
1	Charitable Waqf and Sustainable Human Development	0.682*
2	In kind Waqf and Sustainable Human Development	0.752*
3	Problems facing Charitable Waqf to Support Sustainable human development.	0.825*
4	Means and ways to develop Charitable Waqf in Sport field.	0.912*

R value (table) On level (0.05) = 0.222

It's appeared from table (9) that Values of Correlation Coefficient's is ranged from 0.912 – 0.682 which shows reliability of axis of Survey Form.

Table (10)

Cronbach's alpha coefficient on all axis of scale

S	Axis	Correlation Coefficient
1	Charitable Waqf and Sustainable Human Development	0.853*
2	In kind Waqf and Sustainable Human Development	0.724*
3	Problems facing Charitable Waqf to Support Sustainable human development.	0.618*
4	Means and ways to develop Charitable Waqf in Sport field.	0.592*

R value (table) on level (0.05) = 0.222

It's appeared from table (10) that all values of Correlation Coefficients is ranged from (0.853, 0.592) which indicated reliability of axis of Form of Survey.

The Main Study:

Researcher performs main study on 56 persons of teachers of Sports Administration in some faculties of Physical Education in Arab Republic of Egypt, with percentage (73.68%), and its applied in period from Wednesday 14/3/2018 till Thursday 19/4/2018

The Statistics Treatment:

Statistics Treatment which is suitable to nature of research using SPSS to perform statistics process:-

- Coefficient of correlation
- The percent
- Coefficient of Alpha Cronbach, L.J
- Chi-square test

Presenting the Results and Discussion:

Presenting the Results:

Table (11)

Frequency, percentage and Chi² factor for the first axis power of the charitable endowment and the sustainable human development. N = 56

S/N	Yes		No		Sometimes		Chi ¹
	K	%	K	%	K	%	
1	49	87.50%	5	8.09%	2	3.57%	*41.56
2	48	85.71%	4	7.14%	4	7.14%	*30.56

3	15	26.78%	40	71.42%	1	1.78%	*47.94
4	12	21.42%	39	69.64%	5	8.90%	*86.65
5	52	92.85%	3	5.35%	1	17.85%	*85.76
6	46	82.14%	8	14.28%	2	3.57%	*54.76
7	0	0%	35	62.50%	21	37.50%	*96.26
8	43	76.78%	9	16.07%	4	7.14%	*64.68
9	52	92.85%	2	3.57%	2	3.57%	*25.38
10	40	71.42%	11	19.64%	5	8.90%	*145.00
11	39	69.64%	12	21.42%	5	8.90%	*77.32
12	8	14.28%	33	58.92%	15	26.78%	*63.38
13	5	8.90%	49	87.50%	2	3.57%	*99.65

* Chi² tabular value at significance level is 0.05 = 3.99.

It is clear from table (11) that Chi² calculated value ranges between (30.56 and 145.00), and that there are statistically significant differences in all the axis power.

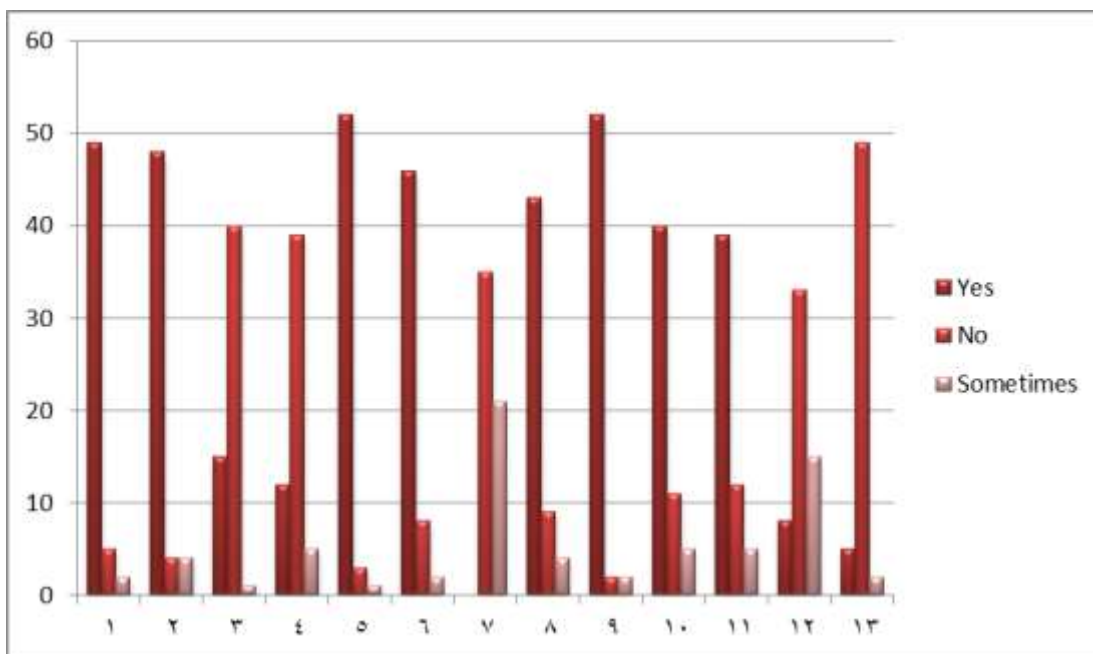


Figure (1) percentage of frequency of the first axis power of the charitable endowment and the sustainable human development.

Table (12)

Frequency, percentage and Chi² factor for the second axis power of the in kind endowment and the sustainable human development. N = 56

S/N	Yes		No		Sometimes		Chi ¹
	K	%	K	%	K	%	
1	5	8.92%	50	89.28%	1	1.78%	*98.62
2	4	7.12%	49	87.50%	3	5.35%	*66.09
3	3	5.35%	47	83.92%	6	10.71%	*82.09
4	7	12.50%	45	80.35%	4	7.14%	*100.32
5	6	10.71%	50	89.28%	0	% 0	*62.68
6	5	8.92%	43	76.78%	8	14.28%	*108.62
7	8	14.28%	42	75.00%	6	10.71%	*87.38
8	4	7.14%	45	80.35%	7	12.50%	*220.09
9	2	3.57%	48	85.71%	6	110.7%	*77.09

* Chi² tabular value at significance level is 0.05 = 3.99.

It is clear from table (12) that Chi² calculated value ranges between (62.86 and 220.09), and that there are statistically significant differences in all the axis power.

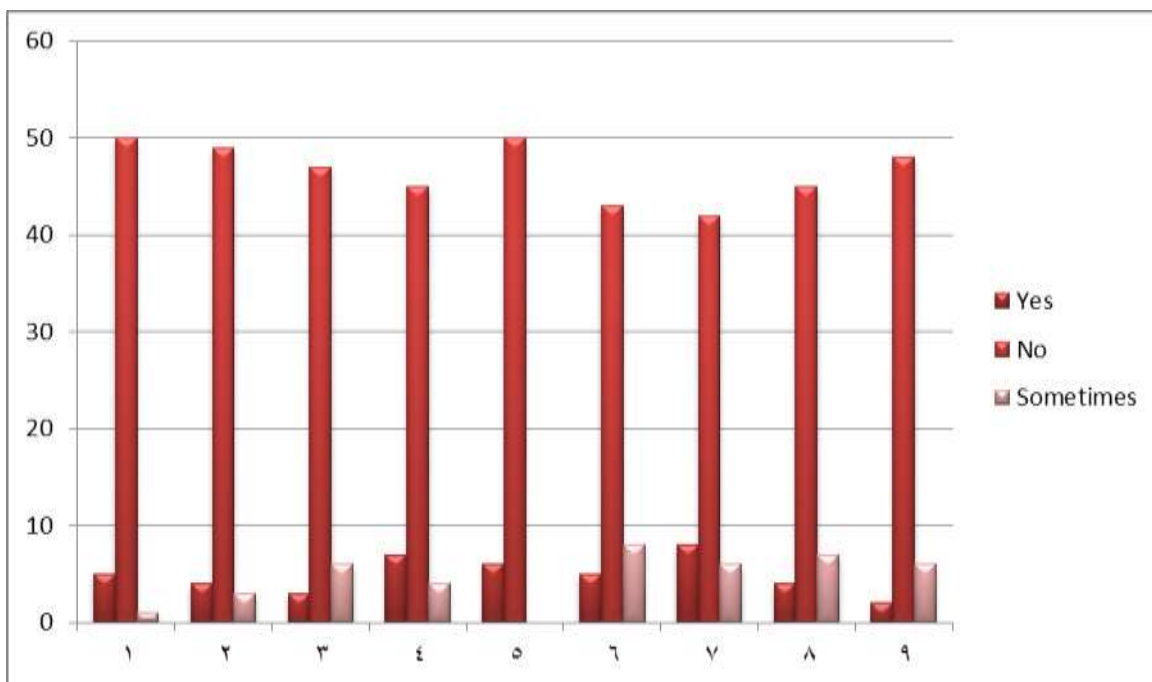


Figure (2) percentage of frequency of the second axis power of the in kind endowment and the sustainable human development.

Table (13)

Frequency, percentage and Chi² factor for the third axis power on the problems facing the charitable endowment to support the sustainable human development. N = 56

S/N	Yes		No		Sometimes		Chi ¹
	K	%	K	%	K	%	
1	48	85.71%	3	5.35%	5	8.92%	*45.56
2	45	80.35%	3	5.35%	8	14.28%	*34.06
3	46	82.14%	5	8.92%	5	8.92%	*49.94
4	47	83.92%	1	1.78%	8	14.28%	*96.38
5	44	78.57%	0	% 0	12	% 21, 42	*72.76
6	42	75.00%	3	5.35%	11	19.64%	*49.77
7	49	87.50%	4	7.14%	3	5.35%	*93.26
8	51	91.07%	1	1.58%	4	7.14%	*203.54
9	46	82.14%	2	3.57%	8	14.28%	*85.33
10	52	92.85%	1	1.58%	3	5.35%	*192.70
11	50	89.28%	2	3.57%	4	7.14%	*92.36
12	40	71.42%	5	8.92%	11	19.64%	*36.38
13	38	67.85%	0	% 0	18	32.14%	*86.98

* Chi² tabular value at significance level is 0.05 = 3.99.

It is clear from table (13) that Chi² calculated value ranges between (36.38 and 203.45), and that there are statistically significant differences in all the axis power.

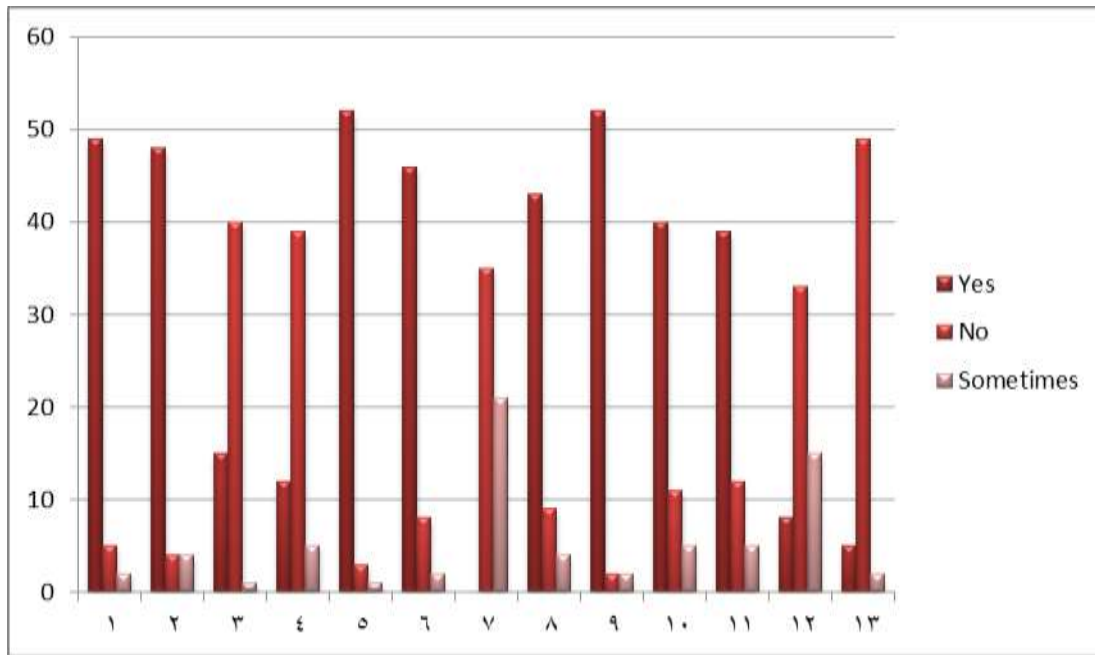


Figure (3) percentage of frequency of the third axis power of the charitable endowment and the sustainable human development.

Table (13)

Frequency, percentage and Chi² factor for the fourth axis power of ways and means to develop the charitable endowment in the sports field .N = 56

S/N	Yes		No		Sometimes		Chi ¹
	K	%	K	%	K	%	
1	42	75.00%	5	3.57%	9	16.07%	*88.85
2	47	83.92%	2	5.35%	7	12.50%	*65.06
3	43	76.78%	2	8.92%	11	19.64%	*62.64
4	49	87.50%	3	5.35%	4	7.14%	*92.00
5	51	91.07%	0	% 0	0	8.92%	*55.47
6	48	85.71%	3	5.35%	4	7.14%	*45.77
7	52	92.85%	2	3.57%	2	3.57%	*96.65
8	44	78.57%	2	3.57%	10	17.85%	*120.98
9	46	82.14%	4	7.14%	6	10.71%	*140.87
10	50	89.28%	1	1.78%	5	8.92%	*64.63

* Chi² tabular value at significance level is 0.05 = 3.99.

It is clear from table (14) that Chi² calculated value ranges between (45.77 and 140.78), and that there are statistically significant differences in all the axis power.

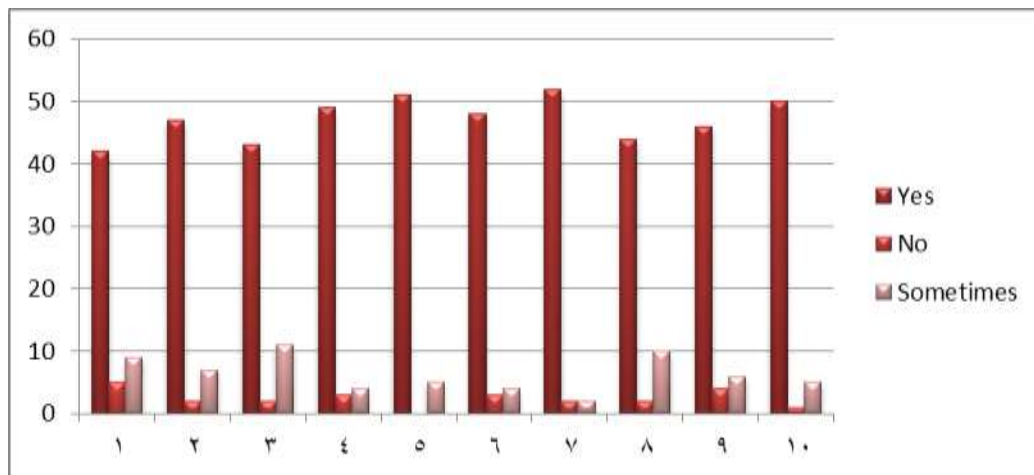


Figure (4) percentage of frequency of the fourth axis power of the charitable endowment and the sustainable human development.

Results Discussion

Discussion of the research query results represented in what is the role of charitable endowments in achieving the objectives of the sustainable human development strategy in the Egyptian sports institutions?

Table (11) indicates the terms of the first axis, which includes the charitable endowment and sustainable human development, shows that the percentage of the response of the sample in the answer (yes) ranged from (0% to 92.85%), the percentages of the response of the research sample in the answer (no) ranged between (0% and 64.12%) and the percentages of the response of the sample in the answer (sometimes) ranged between (3.57% and 87.50%), the value of Kai 2 calculated between (30.56 and 99.65.00), which is greater than the value of Kai 2 = 5.99 at a significant level (0.05), indicating that all expressions of the first axis are statistically significant.

The researcher believes that the response (yes) is given in the terms (5, 9, 1, 2, 6, 8, and 11). It is possible to spend on evaluating the training programs through the funds of the charity endowment. A portion of the Waqf "charity endowment" funds can be allocated to spend on the training programs of the employees of the sports institutions. The endowment provides a minimum level of financial stability for a number of sustainable human development fields; it is possible to establish training halls and measurement laboratories through the funds of charitable endowment. Cash funds are dedicated for the purpose of care and maintenance of the training halls and measurement laboratories.

The Waqf "charity endowment" contributes to the expenditure of training materials to achieve sustainable human development, which indicates the importance of employing the Waqf "charity endowment" funds and their various forms in achieving sustainable comprehensive development in sports institutions.

The researcher believes that the response (No) is in the terms of numbers (13, 3 and 4), and there is allocating part of the waqf "charity endowment" funds to spend on sports competitions. The charitable endowment contributes to the costs of training courses for the employees of the sports institution. The charitable endowment provides loans to complete the training activities of the employees of the sports institution, indicating that there is no allocation of part of the waqf "charity endowment" funds to spend on sports competitions or spending on training courses for the employees of the sports institution or providing loans to complete training activities for the employees of the sports institution.

In the opinion of the researcher, the response (sometimes) mentioned in the terms of numbers (7, 12) represent that the Waqf "charity endowment" of cash for the purpose of care and maintenance of the training halls and measurement laboratories, and is allocated part of the proceeds of the charity endowment as salaries of employees in training programs and indicates that this may sometimes happen.

As shown in table (12) of the terms of the second axis, which includes endowment and sustainable human development, the percentage of response to the sample in the answer (yes) ranged between (3.57% and 14.28%), the percentages of response to the sample in the answer (No) ranged from (0% to 89.28%) and the percentages of the response of the research sample in the answer (sometimes) ranged from (25.00% to 75.00%), the value of Kai² calculated ranges between (62.68, 220.09), which is greater than the value of Kai² (obtained from schedule) = 3.99 at a significant level (0.05, which indicates that all terms of the second axis statistically significant.

In the opinion of the researcher, the response (no) mentioned in the terms (1, 5, 2) that the land of the Waqf "charity endowment" is leased to the sports institution with a wage used to conduct training courses for its employees. The Waqf "charity endowment" contributes to the establishment of endowment centers for experiments and sports research, to establish training programs, which shows that there has been no activation of any lease of land for the Sports Foundation and the establishment of endowment centers for experiments and sports research, and the provision of apartments for the establishment of training programs inside.

As shown in table (13) of the third axis terms, which includes the problems facing the charitable endowment in support of sustainable human development, the percentage of the response of the sample in the answer (yes) ranged between (67.85% and 92.85%), the percentage of response to the sample in the answer (sometimes) ranged between (5.35% and 32.14%). The calculated value of Kai² ranged from (34.06 to 192.70) which is greater than the value of Kai² = 3.99 at a significant level (0.05), indicating that all expressions of the third axis are statistically significant.

The researcher believes that the response (yes) mentioned in all the terms of numbers (8, 11, 7), which are the infringements on the Waqf "charity endowment" properties, lack of cooperation and coordination between the governmental and official agencies and the Ministry of Awqaf "endowments" and the lack of media contribution in spreading awareness of Waqf "charity endowment", the response (No) came in the terms of numbers (3, 12), which represents the weakness of the citizens' trust in the importance of the charitable endowment in sustainable human development, the lack of knowledge of the employees about the importance of the Waqf "charity endowment" and how to exploit its funds and that the response (sometimes) mentioned in the terms of number (13, 5) which represents the lack of knowledge of the staff with the importance of Waqf "charity endowment", how to exploit its funds, the decrease and increase in the real estate prices in Egypt.

As shown in table (14) of the fourth axis terms which is related to the means and ways to upgrade and develop charitable endowment in the field of sports, the percentage of response to the sample in the answer (yes) ranged between (75.00%, 92.85%) and that the percentages of the response of the research sample in the answer (No) ranged between (0% and 8.92%). The percentages of the response of the research sample in the answer (sometimes) ranged between (3.57% and 19.64%). The value of Kai 2 calculated ranged between (45.77, 140.87) which is greater than the value of Kai 2 = 3.99 at a significant level (0.05) indicating that all the terms of the fourth axis are statistically significant.

The researcher believes that the response (yes) came in all the terms of numbers (7, 5) namely the work to spread the awareness of the Waqf "charity endowment" in the media and to urge the cessation of cash and the response (No) mentioned in the terms of number (9, 4), namely the establishment of financial institutions working on investment of "the charity endowment" and to work to raise the awareness of those who owns the "charity endowment" around rationalizing their conditions in line with the requirements of investment and development, the response (sometimes) was mentioned in the terms of numbers (8,3) represents the increase of the support provided by the government to the charity endowment and to work on a variety of investment formulas and financing of the charitable endowment.

This is confirmed by the results of the study of Samir Dehelis (2017 AD) (13) which concluded that the structuring of the Waqf "charity endowment" in the form of a fund or endowment funds will contribute significantly to its development, organization and utilization in sustainable human development and to avoid the obstacles faced by the waqf "charity endowment" sector, the study of Somaia Jaafar (2014) (12) which concluded that the Waqf "charity endowment" funds are a form of cessation of funds that can be the way to revive the role of the Waqf "charity endowment" in sustainable development through its ability to mobilize Waqf "charity endowment" funds by expanding the owners of Waqf "charity endowment" base, in addition to its ability to maintain

and develop Waqf "charity endowment" funds through good management of Waqf "charity endowment" and investment of funds, as well as through funding for developmental projects in the fields of health, education, technology, culture and environmental protection. Waqf "charity endowment" funds play an important role in combating unemployment and poverty through the financing of small and medium enterprises and micro projects and it has become clear that the Waqf "charity endowment" funds have contributed to achieving the desired objectives in supporting sustainable development in both Malaysia and Kuwait, thus, the experience of the Waqf funds in the rest of the Islamic countries can be generalized, they study of Salih Salehi, Nawal Ibn Amara (2004), 15 which aims at clarifying the concepts related to the Islamic Waqf and sustainable development, as well as to highlight the effective role played by Awqaf institutions to achieve Comprehensive Development of Countries, and the Study of Rabia Ibn Zaid, Khayra Al-Dawi (2013 AD) (10), The researchers concluded that Islamic sukuk "checks" is an Islamic financial instrument that contributes to the social and economic development of the Islamic countries, to their ability to raise money and invest it, which allows financing and investing endowment funds and activating the Waqf "charity endowment" to play its fundamental role in achieving sustainable development in the Islamic society, the study of Hamza Abdul Halim (2013 AD) (7), it has been concluded that the Kuwait Waqf "charity endowment" experience represented by the General Secretariat of Awqaf "charity endowment" has been able to have positive characteristics that make it distinct in the Islamic world by the contribution of Waqf "charity endowment" service in community development and attention to sustainable community development.

And also agree with the results of the study of Dalali Al- Gilani (2013 AD) (9), which concluded that if the endowment potential is employed to serve science and education, the development equation has been achieved as the nations aspire to. Therefore, the role of the Waqf "charity endowment" and charitable work should be activated in a comprehensive scientific and cultural renaissance through the inspiration of human experience in its historical accumulations, especially the Islamic experience; in which the scientific endowment marked the life of every intellectual radiation or achievement in the cultural, spiritual and social aspects of Islamic societies for Many centuries as it have been a scientific source through which the civilization of Muslims raised over other human civilizations, the study of Ezz al-Din Gad and others (et. al) (2013 AD) (19) aimed to identify the legitimate aspects of the use of charitable endowment as a source of funding for Egyptian and Arab sports, the conclusions were as follows: The funds of the charitable endowment can be invested as a source of funding for Egyptian and Arab sports, the development of the economic return from the charitable endowment as a source of funding for sport for societal use, the study of Moataz Muhammad Musabeh (2013 AD) (20), the study also aimed to identify the role of charitable endowments in both the monetary and in-kind

aspects of economic development in the Gaza Strip, which are represented in the social, religious, education, health, infrastructure and construction fields. The study reached a series of results that indicate the weak impact of the charitable endowment on economic development, and the failure of the media to spread the awareness of Waqf "charity endowment" and its importance in economic development, The study of Sariba Abdul Latif (2018 AD) (23) Which aimed to gain a better understanding of the problems related to the management of the Waqf "charity endowment". The design of the exploratory research used to meet the authority responsible for implementing the Waqf "charity endowment" management was implemented in Kelantan, a state in Malaysia. The results showed that ineffective legislation and management were among the potential factors hindering good governance of the waqf "charity endowment" and that the good management of charities in Islam, specifically the Waqf "charity endowment", plays an important role in achieving sustainable development. However, a large proportion of the total stay is still dormant worldwide and finally the study of Hussein Elasrag (2017 AD) (22) which aims to spot light on the new role of the charity endowment where endowments can be used not only to provide the immediate necessities of the poor, but also to establish or strengthen business support institutions that can reduce the cost of doing business for the poor. Awqaf can also be used to support and build infrastructure institutions that can improve corporate governance and reduce the cost of doing business.

The researcher believes that the Waqf "charity endowment" plays an important role in the achievement of sustainable development throughout history. However, this role has declined as a result of negative practices and misconceptions about the Waqf "charity endowment". However, the need today revives the role of the Waqf "charity endowment" in the comprehensive and sustainable development of the Egyptian sports institutions. Its contribution may include many benefits and contributions to the various sports activities of club members and may lead to the development of professional workers, including the establishment of recreational and therapeutic health centers and the provision of halls, stadiums and structures necessary for the operation of sports activities and the provision of services and periodic maintenance to ensure continuity through the creation of formulas and methods of Waqf's charity endowment" work consistent with the requirements of the current era.

Thus, the researcher was able to answer the research query: What is the role of charitable endowments in achieving the objectives of the sustainable human development strategy in the Egyptian sports institutions?

The Conclusions and the Recommendations

The Conclusions

It is clear through the researcher's findings:

- * The charitable endowment contributes to achieving the objectives of the strategy of sustainable development in the Egyptian sports institutions through:
1. It is possible to spend on the evaluation of training programs through the funds of the charity endowment.
 2. Waqf "charitable endowment" can be allocated for the payment of proceeds to conduct sports competitions.
 3. Part of the funds can be allocated to spend on the training programs for employees of sports institutions.
 4. The charity endowment provides a minimum level of financial stability for a number of sustainable human development areas.
 5. Training halls and measurement laboratories can be established through charitable endowment funds. Monetary funds are suspended for the purpose of care and maintenance of training rooms and measurement laboratories.
 6. The Waqf "charitable endowment" contributes to the expenditure of training materials to achieve sustainable human development, which indicates the importance of employing the Waqf "charitable endowment" funds and their various forms in achieving sustainable comprehensive development in sports institutions.

The Recommendations

Through the researcher's findings, the results can be summarized as follows:

1. Activate the role of charitable endowment in the sustainable development of Egyptian sports institutions.
2. To spread the culture of the Waqf "charitable endowment" among the public and to encourage its benefits.

Cooperation between the community institutions and the Ministry of Awqaf "Endowment"